

# Linear Ceiling Systems

Practical and elegant  
in line with your style





Project: The Wings, Belgium | Product: 30BD / 30BXD | Architect: assar llox architects

# CONTENT

## Cover

Project: Calle Badajoz, Barcelona, Spain  
Product: 30BXD  
Architect: Battleiroig Arquitectura

## Linear closed

- 75C / 150C / 225C 4
- 84C 6

## Linear open

- MultiPanel 8
- 30BD / 30BXD CCA 10
- 80B / 84B 12
- 84R 14
- 70U 16

## Wide panel

- 300L 18

## Curved

- 84R Curved 20
- Curved Carrier 21

Specifications 22

Hunter Douglas Architectural 23

# Luxalon® Linear Ceiling Systems

## Structure and chaos

With our linear ceiling systems you can create either structure or chaos by using just the most well-known and honest ceiling system ever made. From 30 up to 300 mm and another 8 widths in between there are endless possibilities to design your own style.

Our linear ceiling systems highlight versatility, allowing a variety of visual effects, including radial and diagonal patterns and curves. You can choose from standard available colours, including 5 wood patterns or make up your own custom colours and mix and match different widths and heights to create the perfect look.

## Design options

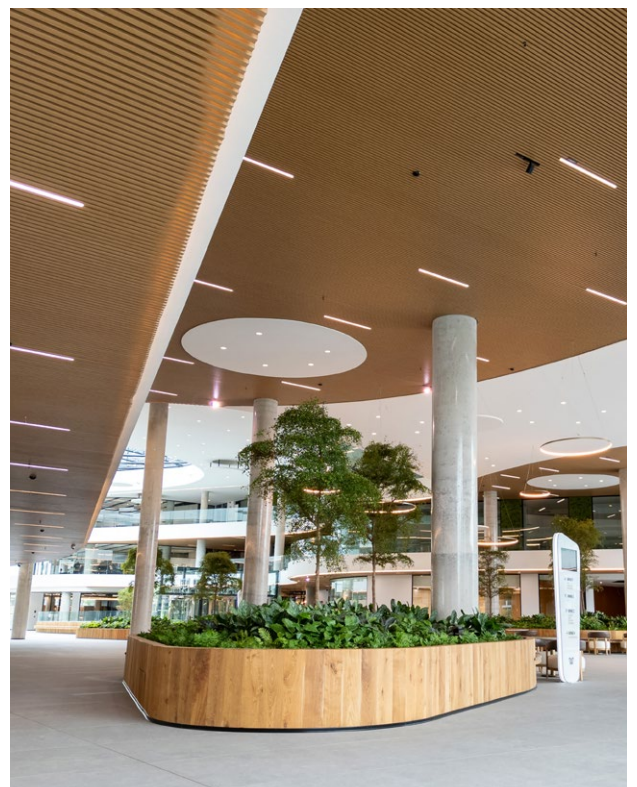
Our linear ceiling systems are available in a wide range of materials, colours and designs, including wood décor and steel. Straight, meandering or undulating shapes can be produced to create character and atmosphere in a wide range of interior spaces.

The Hunter Douglas linear ceiling systems ensures a perfect linear appearance with excellent acoustic performance. Our linear ceilings are particularly suitable for use in areas where acoustic performance is critical such as schools, libraries, shopping malls, indoor sporting arena, public lounges and transport hubs.

## The benefits of a linear ceiling system

**Visual and acoustic comfort in one versatile ceiling system.**

- Endless design options
- Can be customised to your needs
- Open space for integrated technology
- Easy installation with standard carriers
- Compliant with all safety regulations



Project: The Wings, Belgium  
Product: 30BD / 30BXD  
Architect: assar ilox architects





Project: Midsummer place shopping centre, Milton Keynes, United Kingdom | Product: 150C Linear Curved Carrier Ceiling system | Photo: Greig Stephenson GMW London

Linear closed

# 75C / 150C / 225C

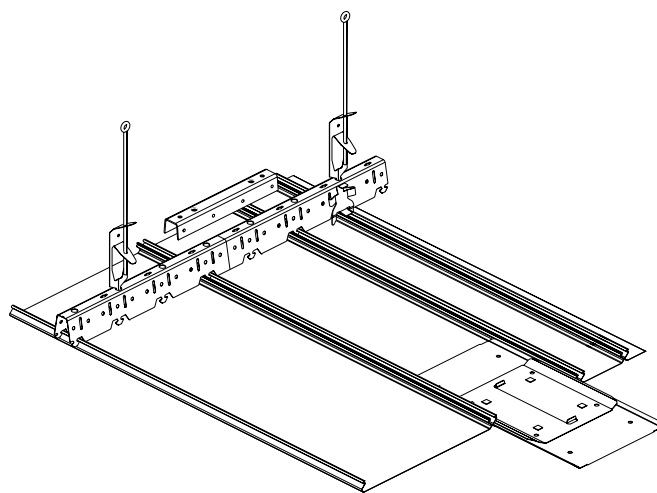
## Create subtle patterns for a closed smooth ceiling

The closed linear panels put less emphasis on the direction of the panels, an important aspect when a designer is looking to achieve a closed smooth ceiling. Three different widths in a uni design or combined with each other, create subtle patterns that can produce a stunning finish to any ceilings appearance.



Project: Lodz University, Lodz, Poland  
Product: 75C / 150C / 225C Linear Ceiling system  
Architect: OOA

## System composition



Luxalon® 75C / 150C / 225C Linear Ceiling system



# Dimensions & Colours

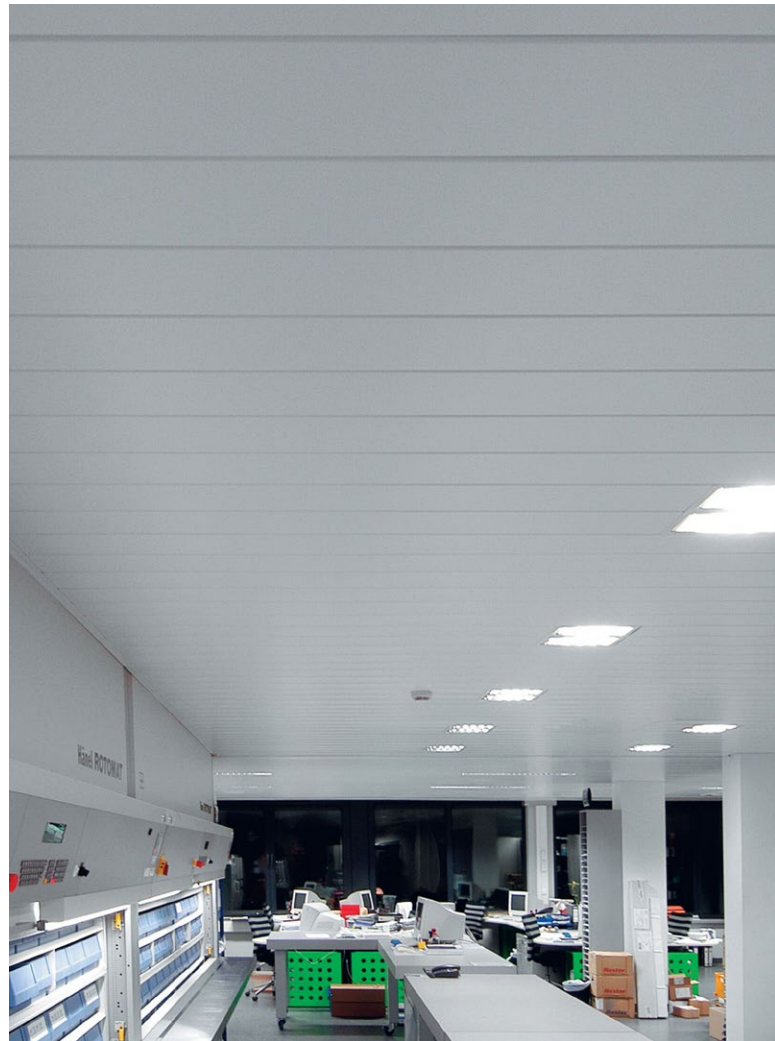
The panels with widths of 75, 150 and 225 mm can be fixed to a universal carrier, all the same or mixed. The panels are available in length from 800 to 6000 mm and are joined together using a panel splice whilst the carriers use the standard carrier connector. Adaptor panels are locked by the adaptor clip.

A wide range of finishes are available including wood décor (75C) or on request in any desired RAL colour (min. quantities apply). See our colour card and availability chart on the website for standard available colours.

## Design elements

Linear panels provide interesting possibilities for directional room designing. Our ceiling systems highlight versatility, allowing a variety of visual effects, including radial and diagonal patterns.

The linear 75C / 150C / 225C ceiling system from Hunter Douglas provide the architect and designer with an opportunity to create a closed smooth ceiling.



Project: Dodoens Hospital, Mechelen, Belgium  
Product: 225C Linear Ceiling system  
Architect: Luyten Lens



Project: Sir Robert Gordon university, Aberdeen, United Kingdom  
Product: 150C Linear Ceiling system  
Architect: Foster Partners

## Key features

### **75C / 150C / 225C Linear Closed Ceiling panels**

- Panel widths: 75 mm, 150 mm and 225 mm
- Panel length: 800 mm up to 6000 mm
- Panel depth 15 mm
- Bevelled edge design
- Interior and exterior applications
- On site waste reduction with factory fabricated dimensional material
- Easy plenum access
- Compatible with industry standard lighting, HVAC, speaker, fire safety, and security services.



Project: Toei Oedo Line ShinEkoda Station, Tokyo, Japan | Product: 84C Linear Metal Ceiling | Architect: Tokyo Metropolitan Government Bureau of Transportation

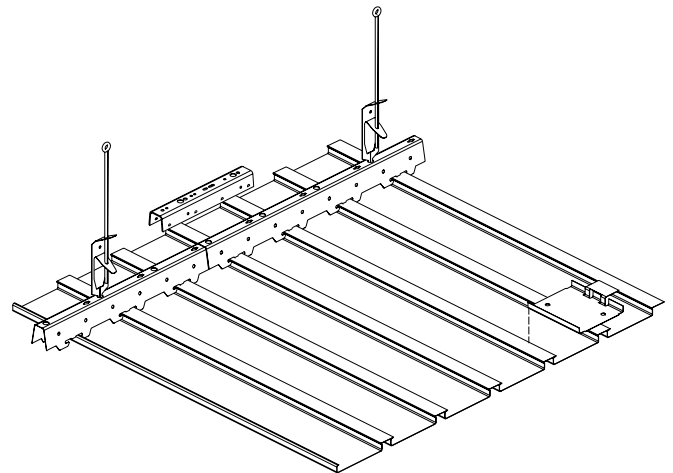
## Linear closed 84C

### A ceiling with stylish linear patterns

The 84C recessed joint aluminum panels can be specified to emphasize the direction of the panels. This easy to install closed ceiling system allows the architect to create stylish linear patterns with a sturdy character. The panels can also include a closed flange with slot perforation for better ventilation and combined with modern and functional lighting.



### System composition



Luxalon® 84C Linear Ceiling system



# Dimensions & Colours

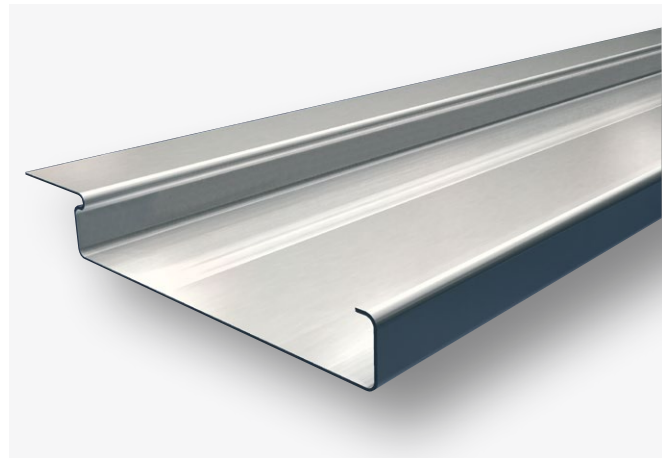
The 84C closed ceiling system consists of box shaped panels, that can be easily clipped onto a carrier system.

The 84 mm wide panels feature a 24 mm wide flange that closes-off the 16 mm joint between the panels. The system module is 100 mm. Panels are demountable for easy access to the plenum.

See our colour card and availability chart on the website for standard available colours.

## Application

The 84C closed aluminium ceiling panel is suitable for all building sectors including Corporate, Transport (airports, metro, bus and train stations), Retail, Leisure, Public space, Hospitality, Healthcare, Education and Residential.



84C Linear panel

*Project: Toei Oedo Line ShinEkoda Station, Tokyo, Japan*

*Product: 84C Linear Metal Ceiling*

*Architect: Tokyo Metropolitan Government Bureau of Transportation*



## Key features

### 84C Linear Closed Ceiling panels

- Panel width 84 mm, joint 16 mm
- Panel length: 800 mm up to 6000 mm
- Panel depth 12.5 mm
- Optimum acoustic control using perforated panels with a non-woven textile
- Interior and exterior applications
- On site waste reduction with factory fabricated dimensional material
- Easy plenum access
- Compatible with industry standard lighting, HVAC, speaker, fire safety, and security services.



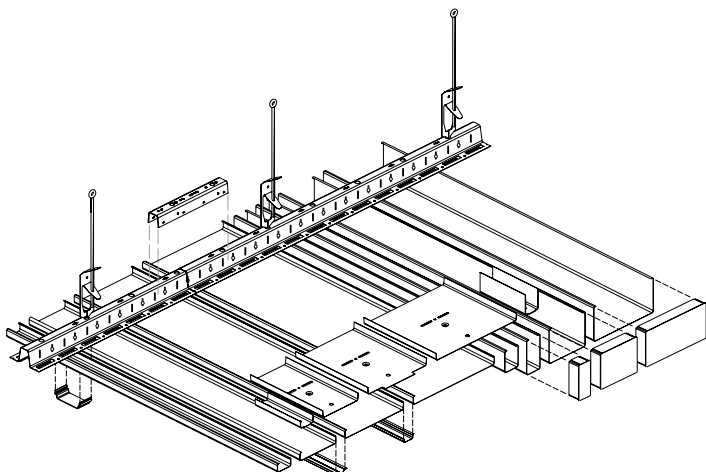
Project: Leaseplan Branch Office, Milano, Italy | Product: MultiPanel Ceiling system | Architect: Progetto CMR

## Linear open MultiPanel

### Combine and create excitement

Mix and match the diverse B, BD and the BXD ceiling panels by combining varying widths and heights. Control acoustics with the perforated panels and create an improved interior ambience. Save installation time because all 8 different panels can be combined on one carrier system. A key feature of this system is the unlimited combinations that can be achieved by varying depths and widths. This gives architects the freedom to design a ceiling with the excitement they are aiming for.

### System composition



Luxalon® MultiPanel Ceiling system



Project: MME, Zug, Switzerland  
Product: MultiPanel Ceiling system  
Architect: Büronauten AG



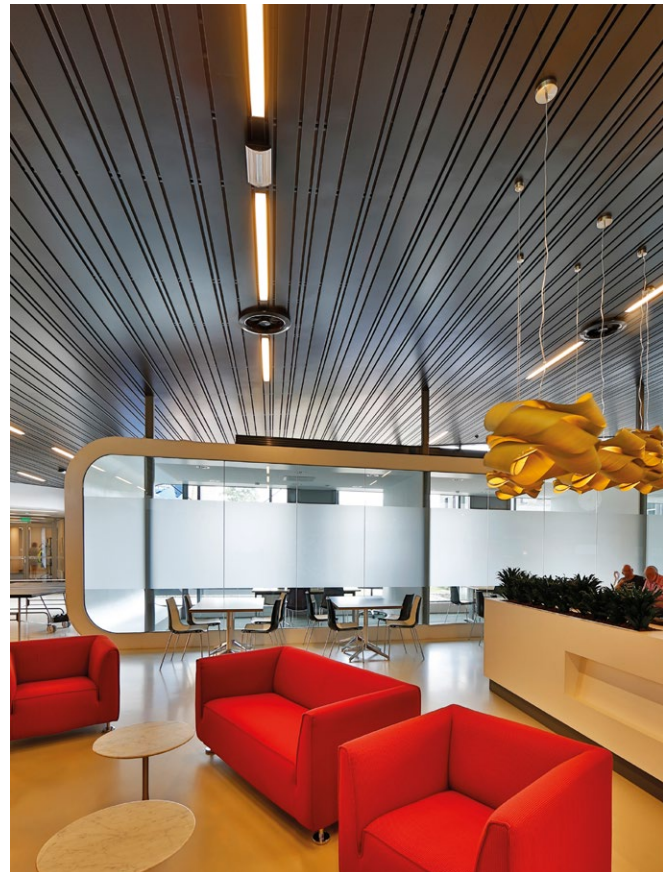
# Dimensions & Colours

The BXD Ceiling panels (height 64 mm) are available in three widths: 30, 80 and 130 mm which can be used in combination with the B panels (height 15 mm), and BD panels (height 39 mm) from the Hunter Douglas Multi-Panel ceiling program. This unique pairing of ceiling solutions makes it possible to create highly functional and beautifully engineered three-dimensional designs.

The wide choice of colours available make it possible to create virtually any ceiling design you can imagine. See our colour card and availability chart on the website for standard available colours.

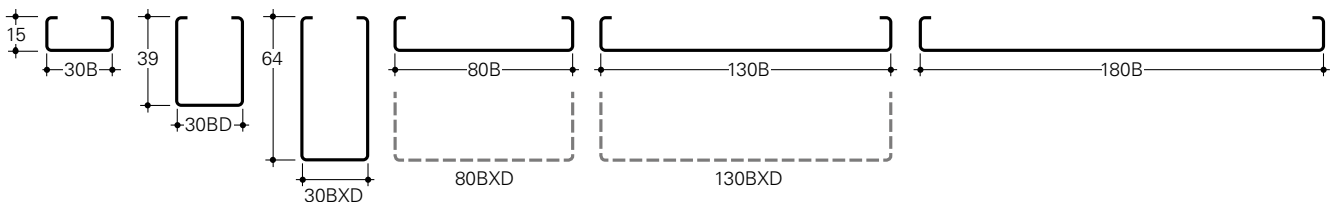
## Design elements

The 20 mm joints can be left open or closed with a V-shaped or U-shaped joint profile.



Project: City Hall Berkelland, Borculo, The Netherlands  
Product: MultiPanel Ceiling system  
Architect: IAA Architecten

Dimensions MultiPanel panels



## Key features

### Linear Open MultiPanel Ceiling

- Panel widths: 30 mm, 80 mm, 130 mm and 180 mm, joint width 20 mm
- Panel length: 800 mm up to 6000 mm
- Panel depths: 15 mm, 39 mm, 64 mm
- Curved carrier application available
- On site waste reduction with factory fabricated dimensional material
- Easy plenum access
- Compatible with industry standard lighting, HVAC, speaker, fire safety, and security services



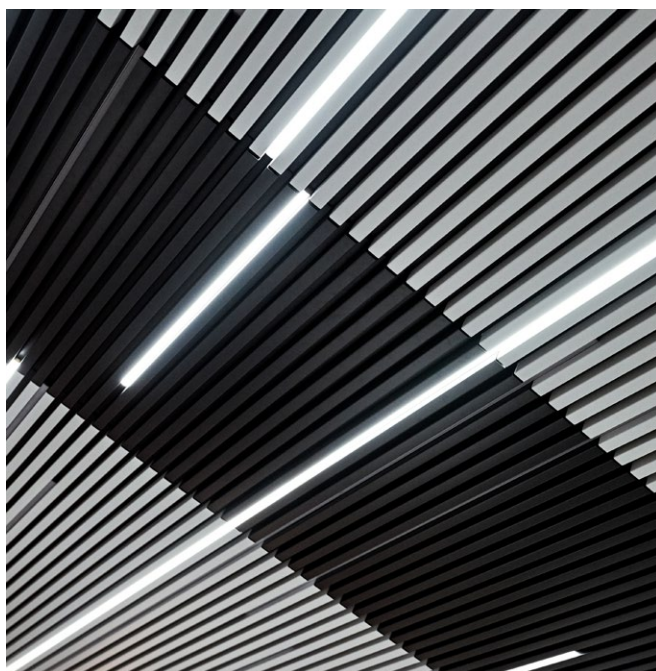
Project: Waterschap Brabantse Delta, Breda, The Netherlands | Product: CCA 30BD Linear Ceiling system | Architect: Claus en Kaan Architecten Rotterdam

Linear open

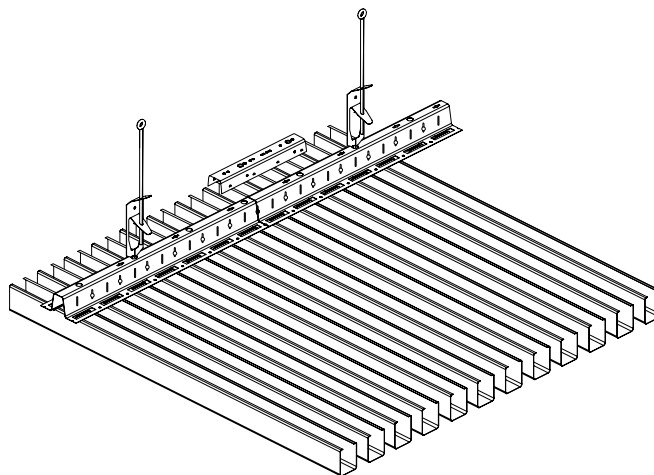
# 30BD / 30BXD CCA

## Enhance comfort with Concrete Core Activation (CCA)

The excellent thermal exchange and acoustic performance of the Luxalon® Linear Open CCA Ceiling system provides 100% acoustic ceiling coverage. This acoustic ceiling creates outstanding comfort and temperature control at levels that cannot be achieved with islands or baffle systems.



## System composition



Luxalon® 30BD CCA Linear Ceiling system



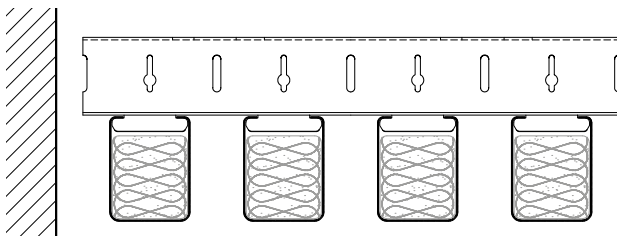
## Dimensions & Colours

The CCA panels come in two heights: 39 and 64 mm which are also used in the Hunter Douglas MultiPanel ceiling program. As a special there is a 60 mm module carrier available with an open joint width of 30 mm to enhance the thermal performance of the CCA panel system.

A standard range of finishes is available, also in steel, or on request in any desired RAL or custom colour. See our colour card and availability chart on the website for standard available colours.

## Design elements

This unique pairing of ceiling solutions makes it possible to create highly functional and beautifully engineered three-dimensional designs. The 20 mm joints are left open for an optimum thermal exchange with the concrete slab above.



*Project: Waterschap Brabantse Delta, Breda, The Netherlands  
Product: 30BD CCA Linear Ceiling system  
Architect: Claus en Kaan Architecten Rotterdam*

## Thermal activation

CCA reaches maximum efficiency if there is no barrier between the concrete structure and the underlying spaces. Independent climate chamber tests have shown that the aluminium used in Luxalon® CCA Acoustic+ 30BD and 30BXD panels and carriers is highly suited for cooling and heating as it functions as a thermal conductor. In combination with the relative openness of this ceiling system (50% openness with complete ceiling coverage), very positive results can be obtained.

## Thermal capacity

Complete ceiling coverage results in a thermal capacity reduction of only 23% when compared to a bare CCA ceiling. During winter the reduction in the thermal capacity compared to a bare CCA ceiling is 6%, based on complete ceiling coverage.

## Key features

### 30BD / 30BXD CCA Linear Open Ceiling

- Panel width: 30 mm, joint width 20 mm (standard) or 30 mm (CCA)
- Panel length: 800 mm up to 6000 mm
- Panel depths: 39 mm (BD) and 64 mm (30BXD)
- Carrier modules: 50 mm (standard) and 60 mm for enhanced heat exchange in CCA application
- On site waste reduction with factory fabricated dimensional material
- Easy plenum access
- Compatible with industry standard lighting, HVAC, speaker, fire safety, and security services.





Project: EKZ Mall, Liepziger Platz, Berlin, Germany | Product: 30BD and 80B Linear Metal Ceiling system | Architect: ARGE LP12

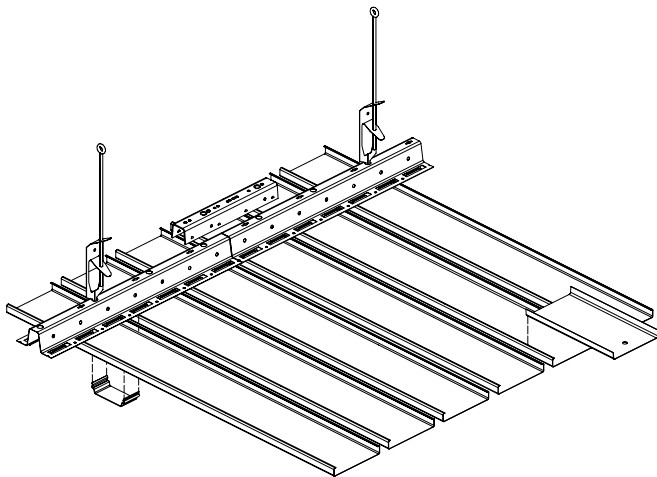
Linear open

# 80B / 84B

## A ceiling with character

The 80B / 84B linear open ceiling system consists of box shaped panels which can be easily clipped onto a carrier. Known for its straight lines, versatility, and ease of installation, the 80B / 84B linear open ceiling system creates a linear appearance providing a directional effect to a rooms interior. Panels are demountable for ease of access to the plenum.

## System composition



Luxalon® 80B / 84B Linear Ceiling system





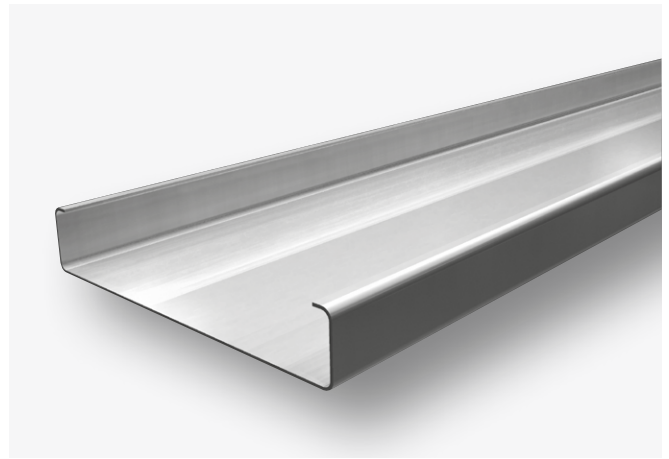
# Dimensions & Colours

The 80B panels are 80 mm wide, 15 mm in height and have a 20 mm open joint between the panels. The 84B panels are 84 mm wide, 12.5 mm in height and have a 16 mm open joint. The 80B/84B panels can easily clipped on the 100 mm module carrier.

This metal ceiling is available in a variety of colours and finishes with perforation patterns for enhanced acoustic performance. See our colour card and availability chart on the website for standard available colours.

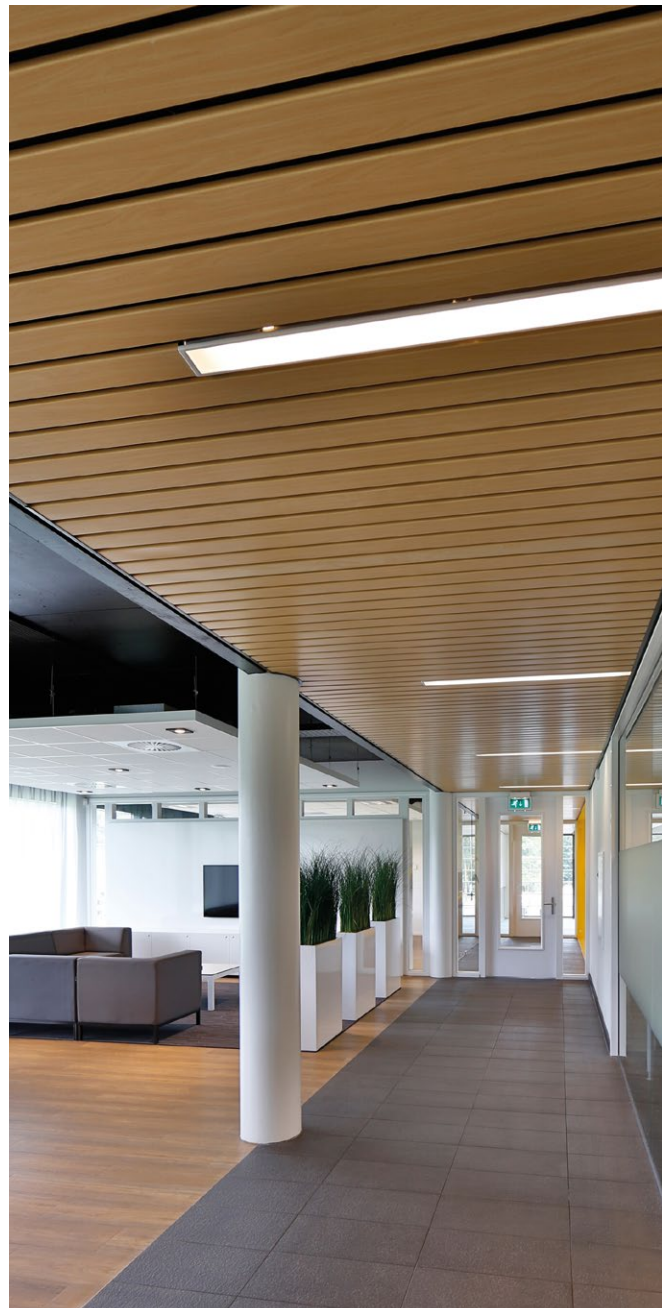
## Application

The 80B / 84B linear open metal ceiling system is suitable for all building sectors including Corporate, Transport (airports, metro, bus and train stations), Retail, Leisure, Public space, Hospitality, Healthcare, Education and Residential.



80B / 84B Linear panel

Project: Vitesse Trainingscomplex Papendal, Arnhem, The Netherlands  
Product: 80B Linear Metal Ceiling system



## Key features

### 80B / 84B Linear Closed Ceiling panels

- Panel width 80 mm, joint 20 mm (80B)  
Panel width 84 mm, joint 16 mm (84B)
- Panel length: 800 mm up to 6000 mm
- Panel depth 15 mm (80B), 12.5 mm (84B)
- Optimum acoustic control using perforated panels with a non-woven textile
- Interior and exterior applications
- On site waste reduction with factory fabricated dimensional material
- Easy plenum access
- Compatible with industry standard lighting, HVAC, speaker, fire safety, and security services



Project: Swimming pool | Product: 84R Linear Metal Ceiling

Linear open

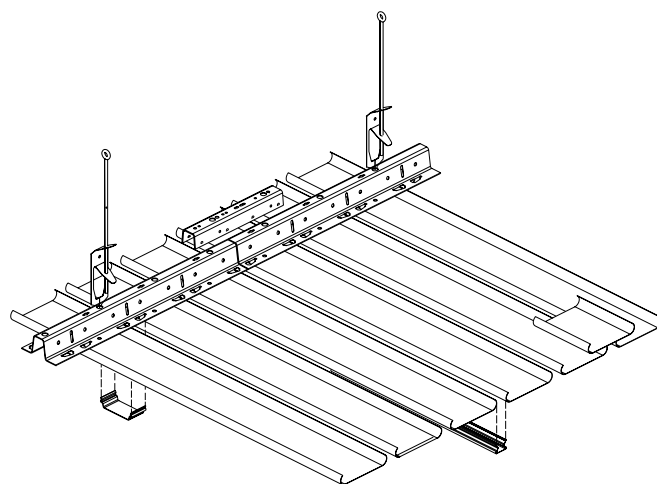
# 84R

## Compose aesthetics with rounded linear fluid lines

Known for its fluid lines, versatility, and easy installation, the 84R system creates a rounded linear aesthetic. Slender rounded panels with 16 mm wide open joints enhance the linear appearance of the ceiling, providing a directional effect to a room. For a smoother appearance the joints can be closed with a join profile that is flush with the face of the panel.



## System composition



Luxalon® 84R Linear Ceiling system



# Dimensions & Colours

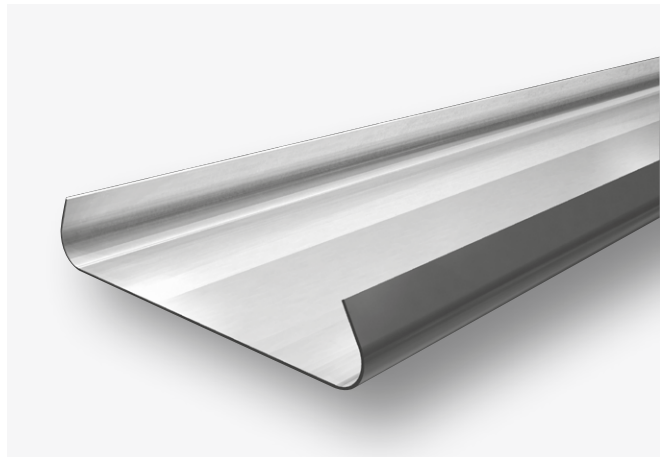
The 84R linear open ceiling system consists of round shaped panels which can be easily clipped onto a carrier. The 84 mm wide panels have a 16 mm open joint between the panels. The system module is 100 mm. Panels are demountable for easy access to the plenum.

A wide range of finishes are available including wood décor or on request in any desired RAL colour. See our colour card and availability chart on the website for standard available colours.

## Application

The 84R open panel interior metal ceiling is suitable for all building sectors including Corporate, Transport (airports, metro, bus and train stations), Retail, Leisure, Public space, Hospitality, Healthcare, Education and Residential environments.

*Project: Swimming pool*  
*Product: 84R Linear Metal Ceiling*



84R Linear panel

*Project: National Aerospace Laboratory, Marknesse, The Netherlands*  
*Product: 84R Linear Metal Ceiling*  
*Architect: Inbo Architecten*



## Key features

### 84R Linear Open Ceiling panels

- Panel width 84 mm, joint 16 mm
- Panel length: 800 mm up to 6000 mm
- Panel depth 15 mm
- Round edges design
- Curved panel application available
- Curved carrier application available
- On site waste reduction with factory fabricated dimensional material
- Interior and exterior applications
- Compatible with industry standard lighting, HVAC, speaker, fire safety, and security services.

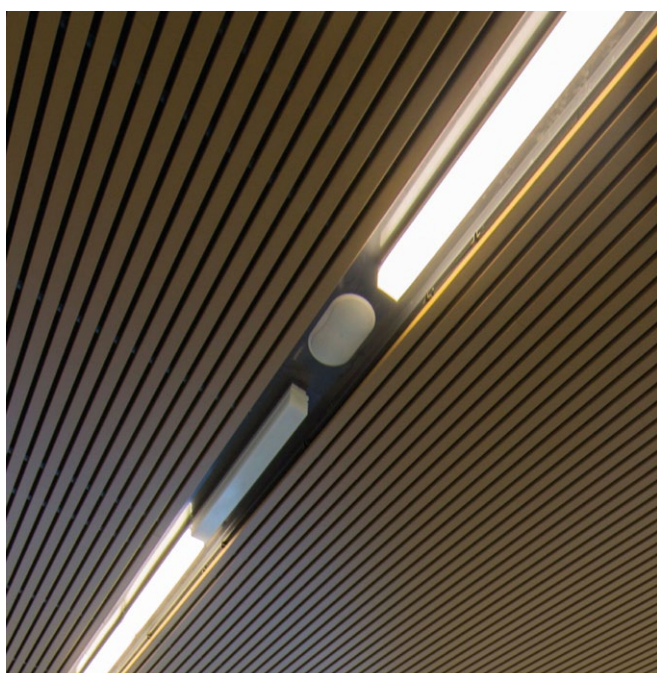


Project: Metrostations, Bonn, Germany | Product: 70U Linear Ceiling system (Curved Carrier)

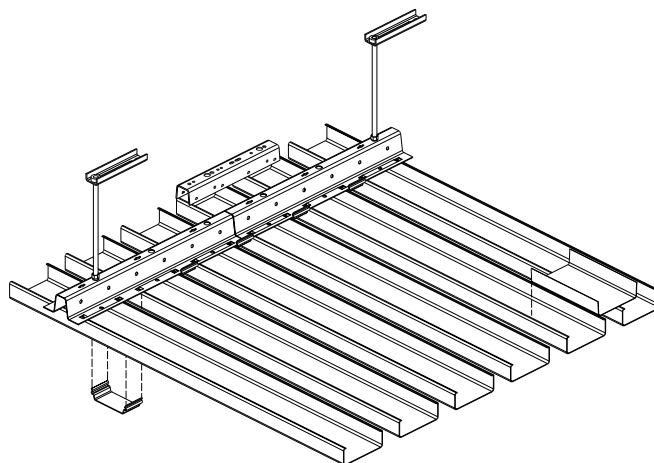
## Linear open 70U

### Where robustness and elegance come together

The 70U system is designed for those applications that require a more robust and stronger panel. Aluminium panels in combination with aluminium carriers make the system suitable for swimming pools and exterior applications. Steel carriers and steel panels are purpose designed for sports hall applications.



### System composition



Luxalon® 70U Linear Ceiling system



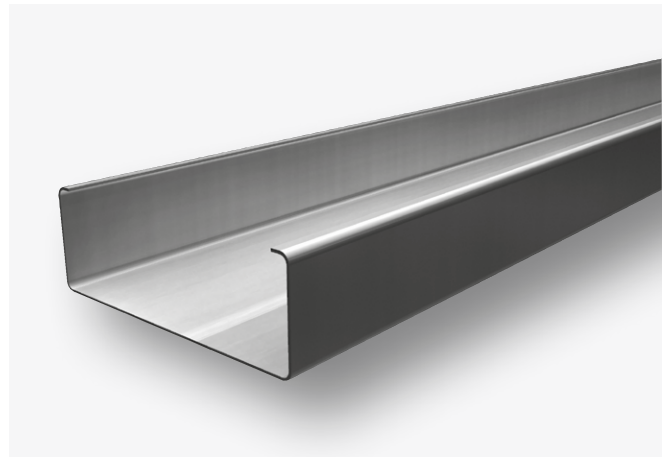
# Dimensions & Colours

The 70U system consists of robust 70 mm wide (25 mm high) box shaped panels from steel or aluminium which are easily clipped onto the 70U carrier and create 30 mm wide, open joints. A standard range of finishes is available, also in steel, or on request in any desired RAL or custom colour (depending on quantity).

## Application

The 70U ceiling system is suitable for a range of building sectors including Transport (airports, metro, bus and train stations), Leisure, and Education environments.

*Project: Swimming Pool Steinerbos, Stein, The Netherlands*  
*Product: 70U Linear Ceiling system*  
*Architect: Op 't Root en Beerts Architecten*



70U Linear panel

## Key features

### 70U Linear Open Ceiling panels

- Panel width: 70 mm, joint width 30 mm
- Panel length: 800 mm up to 6000 mm
- Panel depth 25 mm
- Square edge design
- Curved carrier application available
- Tested on ball impact resistance
- On site waste reduction with factory fabricated dimensional material
- Easy plenum access
- Compatible with industry standard lighting, HVAC, speaker, fire safety, and security services.



*Project: O.L.V. van Lourdescollege, The Netherlands*  
*Product: 70U Linear Ceiling system (Curved Carrier)*  
*Architect: René Van Steenberghe*



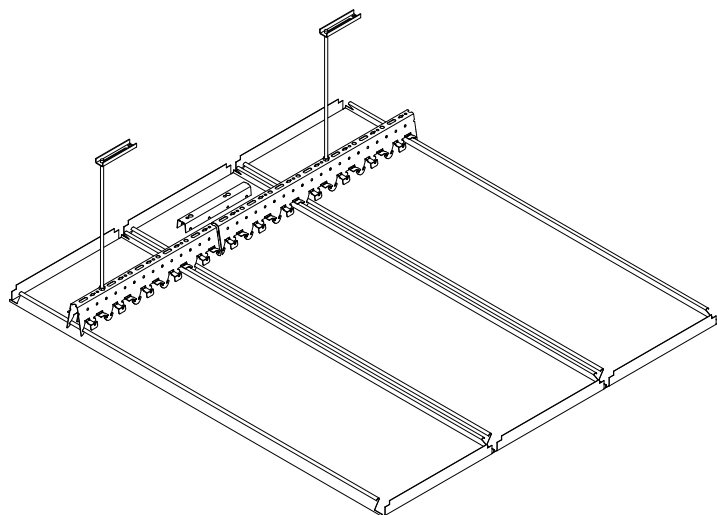
Project: Sporting Lissabon stadium, Portugal | Product: 300L Wide Panel Ceiling system | Architect: Tomas Taveira

## Wide panel 300L

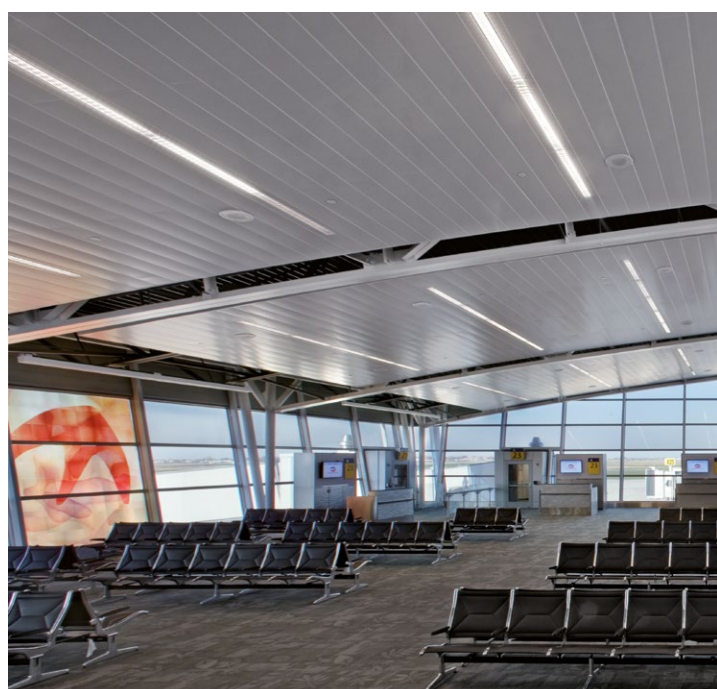
### Bring distinctive prominence to the ceiling

Our 300 mm wide ceiling panels establishes distinction in your project. The robust look of the 300L panel fits perfectly in large open spaces with a high level of noise. With two joint options and a variety of perforations for acoustic performance, our wide panels trim costs without trimming style.

### System composition



Luxalon® 300L Wide Panel Ceiling system



Project: Indianapolis Airport, Indianapolis IN, United States  
Product: Wide Panel Ceiling system  
Architect: AeroDesign Group and HOK



# Dimensions & Colours

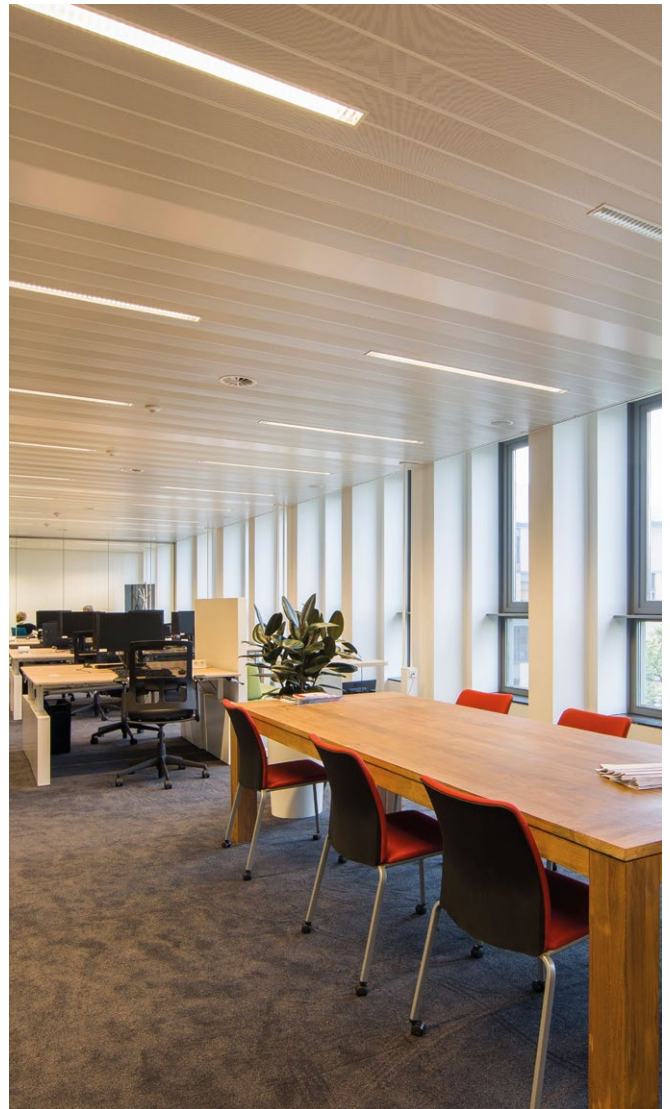
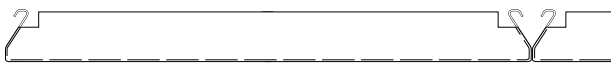
The 300L ceiling panels (height 29 mm) with a width of 300 wide mm have a length up to 6 m, requiring fewer panels and joints to reduce installation cost. One of the 4 standard support systems can be chosen to fit project requirements.

The wide choice of colours available make it possible to create virtually any ceiling design you can imagine. See our colour card and availability chart on the website for standard available colours.

## Application

With excellent sound control properties, 300L panels turn loud environments into spaces with a comfortable acoustic ambiance. 300L panels are suitable for all building sectors. These include corporate, transport (airports, metro, bus & train stations), retail, leisure, public space, hospitality, healthcare, education & residential environments.

*300L panels (straight edge)*



Project: Radboud Hospital, Nijmegen, The Netherlands  
Product: Wide Panel Ceiling system  
Architect: EGM Architecten



## Key features

### Wide Panel Ceiling

- Panel width: 300 mm
- Panel length: 1000 - 6000 mm
- Square edge design
- On site waste reduction with factory fabricated dimensional material
- Easy plenum access
- Interior and exterior applications
- Compatible with industry standard lighting, HVAC, speaker, fire safety, and security services.





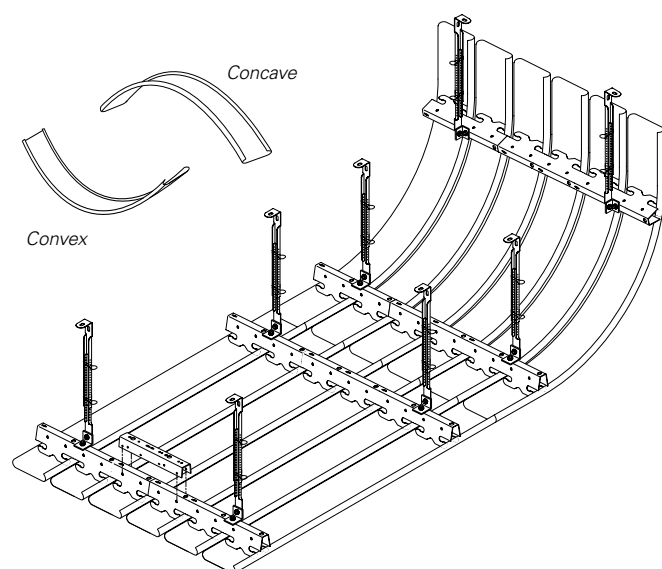
Project: Food Market, Romania | Product: 84R Curved Metal Ceiling system | Architect: nn

# Curved 84R Curved

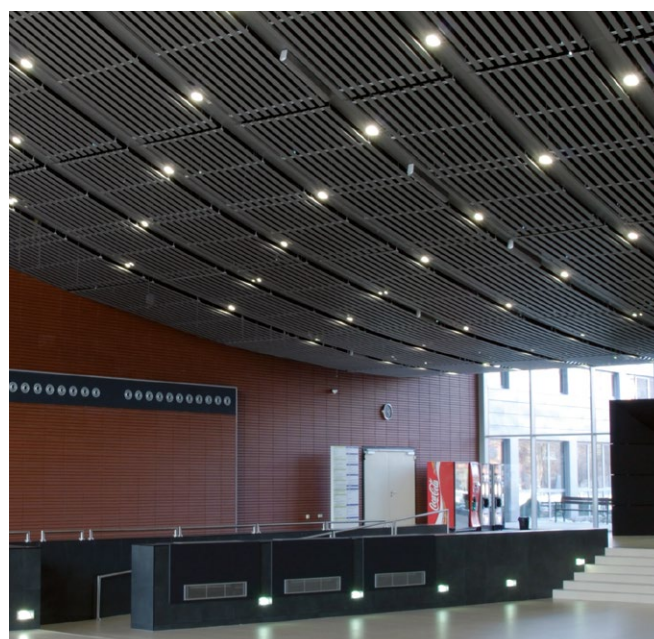
'Lets twist and curve...' your ceiling

Luxalon® Curved Ceilings from Hunter Douglas add a twist to the traditional. Imagine concave, convex, and undulating forms that tempt a look upwards. Create soft curves, up to 90 degrees, and sculpted shapes with Luxalon® Curved Ceilings. The Luxalon® Curved Carrier system helps to transform standard flat panels into dynamic ceiling designs.

## System composition



Luxalon® 84R Curved Panel Ceiling system (Convex)



Project: BME Q building, Budapest, Hungary  
Product: 84R Curved  
Architect: A&D Studio, Mr Antal Lázár



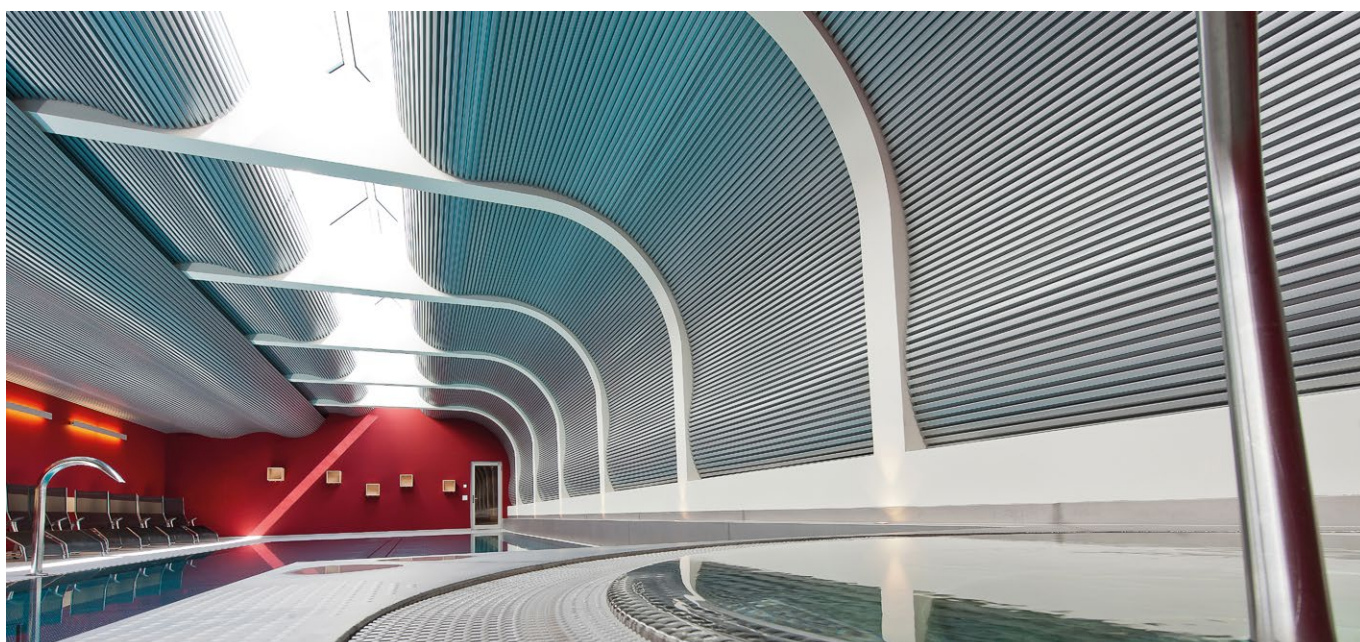


Project: Fitness center World Class, Moscow, Russia | Product: 80B (MultiPanel) Ceiling system (Curved Carrier) | Architect: PRIDEX

## Curved Curved Carrier

Consider a different and dramatic design

With Hunter Douglas Curved Carrier you can create curved shaped ceilings with straight panels. This design is possible when you use the MultiPanel system and the panel systems 84B, 84R and 70U.



Project: Hotel Ambassador, Zermatt, Switzerland  
Product: 30BD Curved Carrier  
Architect: Vogel Architekten



# Specifications

Luxalon® linear ceilings provide interesting possibilities for directional room design. The ceiling systems highlight versatility, allowing a variety of visual effects, including radial and diagonal patterns. They are manufactured from durable roll formed aluminium or steel coils, finished with a polyester paint to provide a long, low maintenance life.

## Integrated technology

Most panels can be easily demounted by hand allowing easy and full access to services and installation in the plenum. Climate control, lighting, sprinklers, smoke detectors, speaker and security systems can all be installed and maintained with ease.



Project: OM Edificio Madrid, Spain  
Product: 30BD / 30BXD  
Architect: Torre Rioja

## Physical data

- Substrate: Steel or aluminium
- Weight: Varies 1.7 - 5.3 kg/m<sup>2</sup>
- Light reflectance (LR) coefficient:
  - Varies with finish
  - RAL9010: LR = 0.81
- Acoustic ratings:  $\alpha_w$  0.35 - 0.95 (H)

## BIM

- REVIT files available, see website for details.

## Fire classification

- Metal ceilings from Hunter Douglas are fully tested for reaction to fire according to EN 13501-1. More information is available on request.

## Leed v4 credits

- MR : Building Product Disclosure
- EQ : Low-Emitting Materials
- EQ : Indoor Air Quality Assessment
- EQ : Acoustic Performance

## Certifications

- TAIM QS
- VOC emissions class A+
- Indoor Air Comfort Gold
- Cradle to Cradle Certified® Bronze

For more information visit our website:  
[www.hunterdouglasarchitectural.eu](http://www.hunterdouglasarchitectural.eu)



Production by  
Hunter Douglas  
Ceiling Center

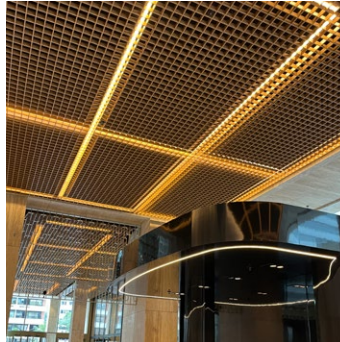




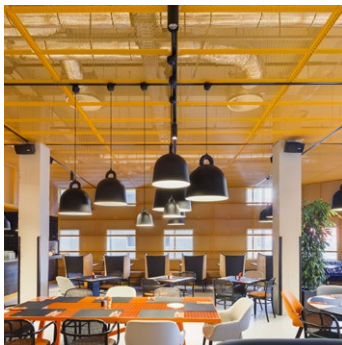
Hunter Douglas is a global player within the field of modern architecture. We understand the conflict between form and function better than anyone, and enrich the market with inspiring solutions that strengthen the aesthetics of buildings and their functionality in terms of indoor climate, energy use and acoustics.



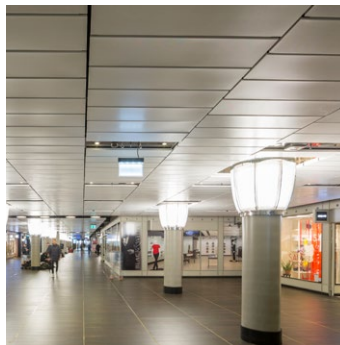
BAFFLES ▲



CELL ▲



STRETCH METAL ▲



TILES & PLANKS ▲

*Our metal ceilings offer outstanding acoustics and unique design options, ranging from linear ceiling panels to baffle and cell ceilings.*

## Architectural services

We support our business partners with a wide range of technical consulting and support services for architects and installers. We assist architects and developers with recommendations for materials, shapes, dimensions, colours and finishes.

We also help creating design proposals, visualisations and installation drawings. Our services to installers range from providing detailed installation drawings and instructions to training installers and advising on the building site.

## More information

Contact our **Project Support** for further help and advice on the design possibilities our applications can create.

Call us:  
**+31 (0)10 - 486 99 11**

Send us an e-mail:  
**info@hunterdouglasarchitectural.eu**

Visit our website:  
**www.hunterdouglasarchitectural.eu**



Hunter Douglas adopts the cradle to cradle (C2C) product philosophy to the design of products that fit the circular paradigm. They are designed for longevity, using materially healthy technical nutrients that can be reused at end of life as a high-quality source for something new.

*Cradle to Cradle Certified®* is a registered trademark of the Cradle to Cradle Products Innovation Institute.



All steel products are 100% recyclable at the end of their lifecycle.



All aluminium products are 100% recyclable at the end of their lifecycle.

## ASIA | AUSTRALIA | LATIN AMERICA | NORTH AMERICA

Austria

Belgium

Bulgaria

Croatia / Slovenia

Czech Republic

Denmark

Finland

France

Germany

Greece

Hungary

Israel

Italy

The Netherlands

Norway

Poland

Portugal

Romania

Serbia

Slovakia

Spain

Sweden

Switzerland

Turkey

United Kingdom

South Africa

Middle East

### CEILINGS



### WALLS



### SUN LOUVRES



### FAÇADES



### HUNTER DOUGLAS ARCHITECTURAL EUROPE

Piekstraat 2

P.O. Box 5072 - 3008 AB Rotterdam

The Netherlands

T. +31 (0)10 - 486 99 11

[info@hunterdouglasarchitectural.eu](mailto:info@hunterdouglasarchitectural.eu)

[www.hunterdouglasarchitectural.eu](http://www.hunterdouglasarchitectural.eu)